

Ethan Single Wardrobe No Drawers 1 Door



kwalu®

Ethan Collection

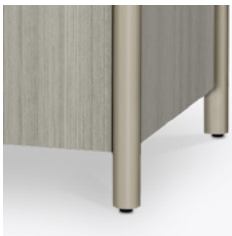
Single Wardrobe
No Drawers 1 Door

Designed by Brian Graham, the collection seamlessly blends form and function, where minimalist design meets the complex needs of healthcare environments. Its soft edges and understated elegance create a serene, cohesive atmosphere that promotes healing and comfort. The collection offers practical storage solutions, including a wardrobe with a bench, a bench, several bedside tables—one featuring a mobile pouf—chests, and a mobile cart, all intuitively designed for ease of use. The durable Protea™ and Protea Fusion surfaces are engineered to withstand the rigors of healthcare settings, ensuring long-lasting performance.

Model: ETNWR01CLL
26.5W 24.25D 72H

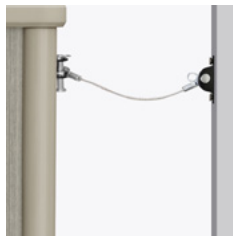


Features



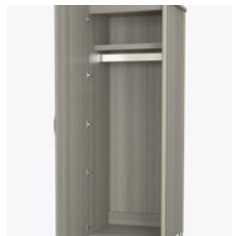
Protea™ Finish

Protea, our proprietary material, avoids the common drawbacks of wood. Protea is moisture impervious, graffiti-resistant, and easy to clean.



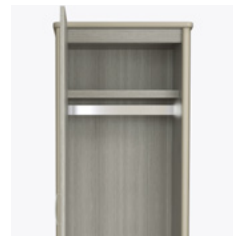
Anti-Tip Kit

An anti-tip device is included to minimize the risk of tip-over and enhance the overall safety of the product.



Door Hinges

Features a 110° opening for easier access and smooth motion.



Clothes Rod

Standard clothing rod may be attached at ADA height of 48" from the floor.



Optional Premium Protea Leg

These optional contrasting premium finishes are available for the Ethan Collection legs - Platinum, Soft Gold, Pure Copper and Black.



Other Wardrobe Styles

Ethan wardrobes included a number of Single and Double styles.

10 Year Warranty

We offer a 10 Year Performance Warranty on both construction and finish, so the product is guaranteed to stay looking like new for 10 years.

kwalu®

6160 Peachtree Dunwoody Rd. Building C, Atlanta, GA 30328
1-877-MY-KWALU kwalu.com

CGETNWR01F0726