

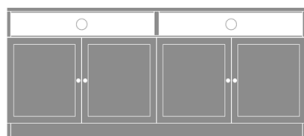
Kwalu Features

Product Dimensions and Specs

Overall 144W 18D 80H

Wt. 492 lbs

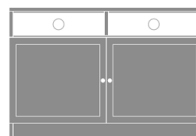
Product Statement of Line Images



Lancaster Media Console with Shelves – 72"W
Model: LAMUC04S72
72W 18D 32H



Lancaster Media Console with Drawers – 60"W
Model: LAMUC44S60
60W 18D 32H



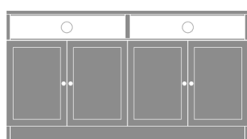
Lancaster Media Console with Shelves – 48"W
Model: LAMUC02S48
48W 18D 32H



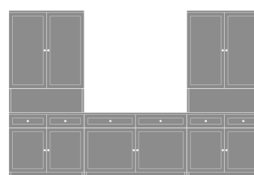
Lancaster Media Storage Base – 36"W
Model: LAMCB22S
36W 18D 32H



Lancaster Media Console with Drawers – 48"W
Model: LAMUC22S48
48W 18D 32H



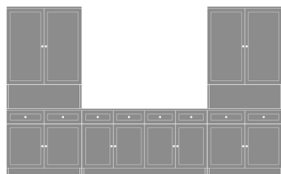
Lancaster Media Console with Shelves – 60"W
Model: LAMUC04S60
60W 18D 32H



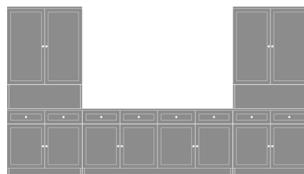
Lancaster Media Unit with Drawers – 120"W
Model: LAMUCSD10
120W 18D 80H



Lancaster Media Console with Drawers – 72"W
Model: LAMUC44S72
72W 18D 32H



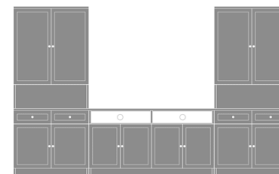
Lancaster Media Unit with
Drawers – 132"W
Model: LAMUCSD11
132W 18D 80H



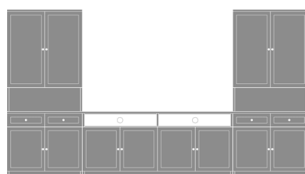
Lancaster Media Unit with
Drawers – 144"W
Model: LAMUCSD12
144W 18D 80H



Lancaster Media Unit with
Open Shelves – 120"W
Model: LAMUCSS10
120W 18D 80H



Lancaster Media Unit with
Open Shelves – 132"W
Model: LAMUCSS11
132W 18D 80H



Lancaster Media Unit with
Open Shelves – 144"W
Model: LAMUCSS12
144W 18D 80H

Product Features



Durable Finish

Kwalu's proprietary finish doesn't have any of the drawbacks of wood. The finish is moisture impervious, easy to clean and maintenance-free.



Chamfered Frames

The raised overlay on this collection adds a classic style feature.



Optional Widths

Choose from 3 optional widths - 120", 132" or 144".



10 Year Warranty

We offer a 10 Year Performance Warranty on both construction and finish, so the product is guaranteed to stay looking like new for 10 years.

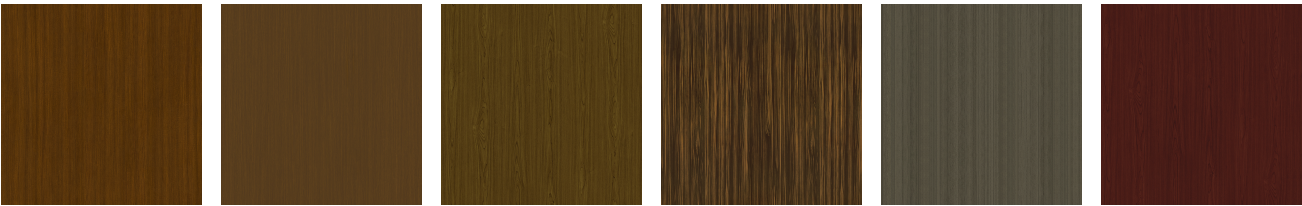
[Learn More >](#)

Product Finishes

Casegood Finish



Sugar Maple Weathered Teak Vintage Teak Light Walnut Patagonian Cherry Medium Cherry



English Chestnut Northern Walnut American Walnut Golden Ebony Silver Ash African Mahogany



Espresso Natural Mahogany Midnight Oak

Product Environmental Certifications

