

## Kwalu Features

## Product Dimensions and Specs

**Overall** 21W 19D 25H

**Wt.** 30 lbs

## Product Statement of Line Images



Lancaster Bedside Cabinet, 3  
Drawers  
Model: LABS30  
21W 19D 30H



Lancaster Bedside Cabinet, 1  
Drawer, 1 Door, Left-Hinged  
Model: LABS11L  
21W 19D 30H



Lancaster Nightstand, 1  
Drawer  
Model: LANS10  
21W 19D 25H



Lancaster Bedside Cabinet, 4  
Drawers  
Model: LABS40  
21W 19D 32H



Lancaster Bedside Cabinet, 1  
Drawer, 1 Door, Right-Hinged  
Model: LABS11R  
21W 19D 30H

## Product Features



### Durable Finish

Kwalu's proprietary finish doesn't have any of the drawbacks of wood. The finish is moisture impervious, easy to clean and maintenance-free.



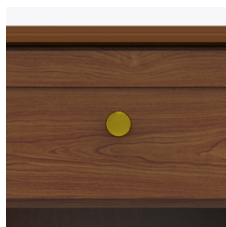
### Chamfered Frames

The raised overlay on this collection adds a classic style feature.



### Drawers

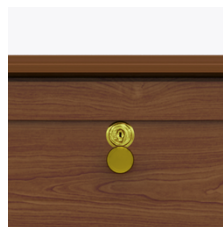
Are constructed with both dowel and mechanical fasteners for additional strength. 100lb static and dynamic load Euro Drawer Slides allow for easy opening and closing.



### Hardware

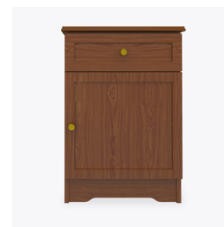
Choose from dozens of hardware styles, including ADA compliant options.

[Learn More >](#)



### Optional Top Drawer Lock

A top drawer lock is available and is optional.



### Other Bedside Styles

Lancaster bedside styles include a 1 drawer, 1 door version and 1, 3 and 4 drawer versions.

[Learn more >](#)

Product Finishes

Casegood Finish

					
Sugar Maple	Weathered Teak	Vintage Teak	Light Walnut	Patagonian Cherry	Medium Cherry
					
English Chestnut	Northern Walnut	American Walnut	Golden Ebony	Silver Ash	African Mahogany
					
Espresso	Natural Mahogany	Midnight Oak			

Product Environmental Certifications

