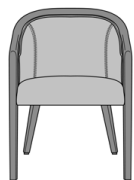


Kwalu Features

Product Dimensions and Specs

Overall	23.5W 24D 32.25H
Seat	20W 19D 19H
Arm	26H
Wt.	25 lbs
Wt. Capacity	350 lbs

Product Statement of Line Images



Miranda Arm Chair
Model: MRND1111
23.5W 24D 32.25H
26AH

Product Features



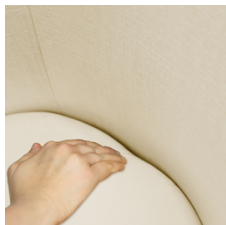
Cut Out Arm Detail

Distinctive arm cut out detail allows for easy handling of the chair.



Durable Finish

Kwalu's solid surface (1/8" thick) proprietary finish doesn't have any of the drawbacks of wood. The frames are moisture impervious, graffiti-resistant, easy to clean and maintenance-free.



Concealed Cleanout

Concealed cleanout eliminates a debris build-up behind the seat cushion.



Optional Casters

Optional casters available on front legs only.

[Learn more >](#)

Product Foam

Foam is compliant with CAL 117 and AB 2998

Product Glides

Metal Knock in Glide with Teflon Cap

Product Finishes

Frame Finish



Sugar Maple Weathered Teak Northern Oak Vintage Teak Patagonian Cherry Northern Walnut



Medium Cherry English Chestnut Light Walnut Silver Ash Golden Ebony African Mahogany



Espresso Natural Mahogany Midnight Oak Blackwood Premium Platinum Premium Soft Gold



Premium Pure Copper Premium Black

Product Environmental Certifications

