

Kwalu Features

Kwalu Fusion

- Kwalu's proprietary polymer material
- Non-coated
- Routed edge seam

Moisture Impervious

- Our Kwalu material is smooth, non-porous, and liquid impervious

Proprietary Maintenance-Free Finish

- Chemical, impact, ink, and scratch resistant
- 100% free of short-lived catalytic lacquers, polyurethane varnishes and delicate wood veneers
- Look of wood's enduring beauty, without undertaking its costly setbacks

Easy to Clean

- Withstands rigorous cleaning regime
- 100% bleach cleanable
- Provide long term cleanability
- Survives All EPA's Cleaning-Disinfectant Agents
- Survives Clorox's Healthcare Portfolio of Cleaning-Disinfectant Products

24/7 10-Year Performance Warranty on Kwalu-made Panels

- Kwalu's warranty is to term, not pro-rated
- Guaranteeing both the furniture construction and Kwalu finish
- For full details of warranty offered, including any bought-out items, please refer to the Terms and Conditions of Sale <https://www.kwalu.com/sales-terms-conditions/>

Eco-friendly

- LEED credits available for "Material + Resources" and "Indoor Environmental Air Quality"
- Made in North America
- CARB Compliant

Auburn Collection Features

Tops

- Edge Type: Waterfall profile
- Edge Banding Thickness: 3/8"
- Top Overhang: - Sides: 1/8" - Front: 1/4" - Back: 1/16"
- Corner Radius: 1/2"
- Optional 1" thick solid surface top

Doors

- Door Style: Inset
- Door Hinge: 100° self-closing Euro hinge
- Edge Banding thickness: 1/16"

Drawers

- Drawer Style: Inset
- Drawer Slide: 100lb. nickel plated, soft close, ball bearing removable slides
- Drawer Box Sides and Back: 1/2" board
- Drawer Bottom: 1/4" board
- Drawer construction: 3- piece construction; dowel and mechanical fasteners
- Drawer Pulls: ADA Compliant pulls available
- Edge Banding Thickness: 1/16"

Back Construction

- 1/4" Solid board for most products
- 3/4" Back panel for bedside cabinets with casters

Joining System

- Dowel and mechanical fasteners

Vertical Aluminum Reinforcement

- On all cabinets in this collection

Venting

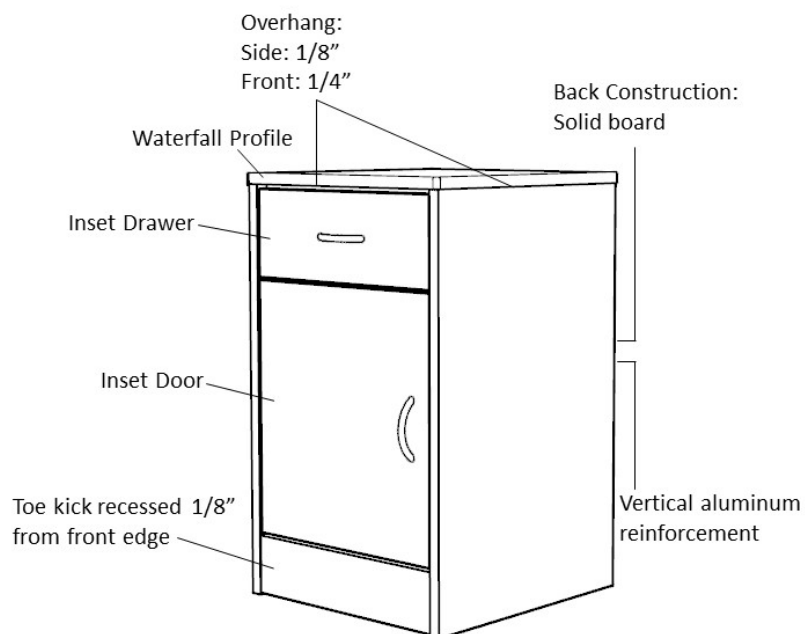
- Venting on back of bedside cabinet with one drawer, one door
- Venting on back of bedside cabinet with three drawers and casters

Glides

- Standard option for most products: Nylon knock-in glides
- Cabinets over 30" wide and/or 48" high: Screw-in levelers

Casters Available

- 3" twin-wheel locking casters on front, 3" twin-wheel non-locking casters on rear for the following units: - AUBS30HCCT - AUBS30HCFT - AUBS11HCFTL - AUBS11HCFTL - AUBS11HCFTL - AUBS11HCFTL - AUBS11HCFTL
- Supply cart - 4" locking caster on front, 4" non-locking caster on rear



Product Dimensions and Specs

Overall 18.25W 19D 30H

Wt. 86 lbs

Product Statement of Line Images



Auburn Bedside Cabinet, 1
Drawer, 1 Door, Left-Hinged
Moasdfadel: AUBS11L
18.25W 19D 30H



Auburn Bedside Cabinet, 1
Drawer, 1 Door, Right-Hinged
Moasdfadel: AUBS11R
18.25W 19D 30H

Product Features



Durable Finish

Kwalu’s proprietary finish doesn’t have any of the drawbacks of wood. The finish is moisture impervious, easy to clean and maintenance-free.



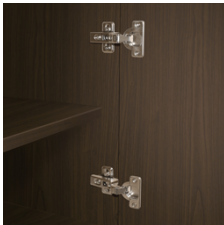
Wall Mount Hardware

The kit and instructions for wall mounting are included with this product. The wall mount instructions provided must be followed carefully for a secure, durable, and long-lasting solution to ensure the safety of the unit and the user.



Waterfall Edging on Top

Waterfall edging creates continuous smooth surface for easy cleaning.



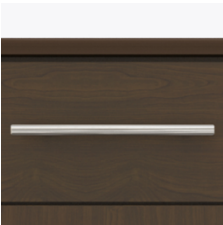
Door Hinges

100° self-closing, kitchen-grade Blum® Euro Hinges provide a smooth motion.



Drawers

Are constructed with both dowel and mechanical fasteners for additional strength. Ball bearing removable slides are fully extendable.



Hardware

Choose from dozens of hardware styles, including ADA compliant options.



Rear Venting

Rear venting maximizes air circulation for improved health.

Product Finishes

Casegood Finish

					
Premium Black (Protea™ Fusion)	Premium White (Protea™ Fusion)	Sand Ash (Protea™ Fusion)	Natural Maple (Protea™ Fusion)	Natural Ash (Protea™ Fusion)	Medium Oak (Protea™ Fusion)
					
Medium Ash (Protea™ Fusion)	Grey Ash (Protea™ Fusion)	Graphite Walnut (Protea™ Fusion)	Charcoal Oak (Protea™ Fusion)	Espresso (Fusion)	Silver Ash (Fusion)
					
Golden Ebony (Fusion)	Medium Cherry (Fusion)	Patagonian Cherry (Fusion)	Light Walnut (Fusion)	Weathered Teak (Fusion)	

Product Environmental Certifications

